

Ashtons



105 Rowntree Avenue YO30 6HG

£1,350 Per Month

3



1



1



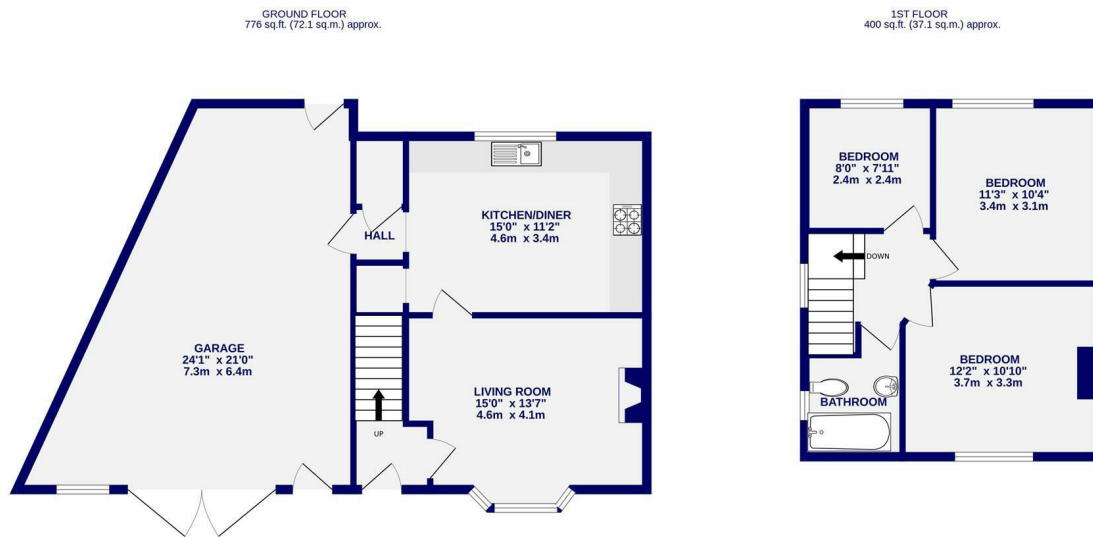
D



A well-proportioned three bedroom end-terrace property offering gardens to the front and the rear in addition to the benefit of off street parking. Located to the north of the city the property with good links to the city centre and within walking distance to Nestle and York Hospital. Offered on an unfurnished basis and comprising entrance hall, living room to the front with wood burning stove. Dining / kitchen with underfloor heating and appliances to include range style cooker and washing machine, dishwasher and fridge freezer, pantry for additional storage. Integral door to spacious garage with hand built bar. The first floor houses two double bedrooms, a good size third bedroom and three piece bathroom with shower over bath. Externally the house has a lawned rear garden and patio area and off street parking to the front.

Available 1st August

Deposit £1450 / EPC D / Council Tax Band B



TOTAL FLOOR AREA: 1175 sq.ft. (109.2 sq.m.) approx.
 Whilst every attempt has been made to ensure the accuracy of the floorplan, measurements of rooms and any other items are approximate. If included in the plan the garage/stores will form part of the overall floor area and no responsibility is taken for any error, omission or mis-statement. This plan is for illustrative purposes only and should be used as such by any prospective purchaser. The services, systems and appliances shown have not been tested and no guarantee as to their operability.
 Made with Metropix ©2026